



Parent's Feedback Analysis on Curriculum AY: 2022-2023

Questions

F1 : The courses of curriculum have relevance to the present scenario.
F2 : Does the curriculum have enough emphasis on the practical courses.
F3 : Does the curriculum able to bridge the gap between the industries and the institute.
F4 : Does the curriculum sensitize the student for the issues related to the gender equality, effective communication, professional ethics and social responsibilities.
F5 : Does the curriculum enrich the student with the knowledge required to withstand the present job competency.
F6 : Does the curriculum enrich with the content to compete for competitive examination and for higher studies?
F7 : How do you rate the courses which are skills related suiting to the industry included into the programmes?
F8 : How do you rate the learning experience in terms of their relevance to the real-life application?
F9 : Overall rating to the curriculum.

Total Parents Response : 55

Questions	Response Value				
	1	2	3	4	5
F1	0	0	0	22	33
F2	0	0	0	22	33
F3	0	0	0	22	33
F4	0	0	11	22	22
F5	0	0	0	22	33
F6	0	0	11	11	33
F7	0	0	0	22	33
F8	0	0	0	22	33
F9	0	0	0	12	43

Table 1 : Response Level Table

L1 =Strongly Disagree, L2 = Disagree, L3 = Neutral, L4 = Agree, L5 =.Strongly Agree;



Code	Percentage	Rubrics
F1	92	Strongly Agree
F2	92	Strongly Agree
F3	92	Strongly Agree
F4	84	Strongly Agree
F5	92	Strongly Agree
F6	88	Strongly Agree
F7	92	Strongly Agree
F8	92	Strongly Agree
F9	96	Strongly Agree

Table 2 : Rubrics Table

Rubrics $\geq 70\%$ Strongly Agree, 60- 69% Agree, 50- 59% Neutral, 40- 49% Disagree, $< 40\%$ Strongly Disagree

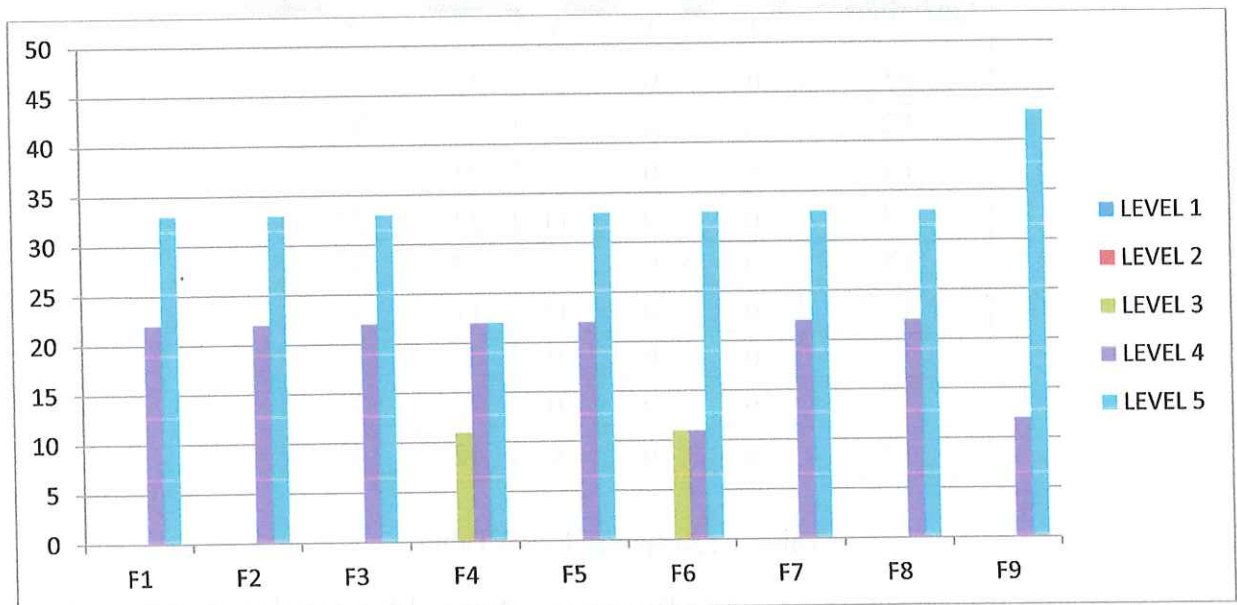


Figure 1 : Response Level Graph