



Alumni's Feedback Analysis on Ambience AY: 2022-2023

Questions

F1 : Classrooms: (Space, Projector, ICT etc.)
F2: Lab Facilities: (equipment's, maintenance and calibration)
F3: Placement: Proactive, soft skill training etc.,
F4: Library: Titles, volumes, digital lib. Journals
F5: Internet: Band width, speed, access 24x7,
F6: Transport: (Rout, schedule, seating, standing vehicle condition etc.)
F7: Canteen: (Cleanliness/menu/waiting/price)
F8: Hostels: (Cleanliness, Power, Security, Discipline, mess facility)
F9: Sports: (Gym, fields, encouragement, trainers)
F10: Cultural Forums: encouragement and festivities
F11: Drinking water:
F12: Toilets: (hygienic, water supply)
F13: Medical Facility
F14: Safety and security in the Campus
F15: Parking Facility (Space, safety)
F16: College stationary shop
F17: Overall rating for the Ambience



Total Alumni Responses : 55

Questions	Response Value				
	1	2	3	4	5
F1	0	0	5	11	39
F2	0	0	2	9	44
F3	0	0	0	11	44
F4	0	0	0	11	44
F5	0	0	1	11	43
F6	0	0	0	11	44
F7	0	0	0	11	44
F8	0	0	5	6	44
F9	0	0	0	11	44
F10	0	2	0	9	44
F11	0	1	0	11	43
F12	0	0	2	10	43
F13	0	0	0	12	43
F14	0	2	0	11	42
F15	0	1	1	11	42
F16	0	0	6	7	42
F17	0	0	0	11	44

Table 1 : Response Level Table

L1 = Strongly Disagree, L2 = Disagree, L3 = Neutral, L4 = Agree, L5 = Strongly Agree;



RAJEEV INSTITUTE OF TECHNOLOGY

Plot # 1 (D), Growth Centre, Bangalore-Mangalore Bypass Road, HASSAN- 573 201, KARNATAKA
(Affiliated to VTU, Belagavi., Approved by AICTE, New Delhi., Recognized by Govt. of Karnataka)

Code	Percentage	Rubrics
F1	92	Strongly Agree
F2	95	Strongly Agree
F3	96	Strongly Agree
F4	96	Strongly Agree
F5	95	Strongly Agree
F6	96	Strongly Agree
F7	96	Strongly Agree
F8	94	Strongly Agree
F9	96	Strongly Agree
F10	95	Strongly Agree
F11	95	Strongly Agree
F12	95	Strongly Agree
F13	96	Strongly Agree
F14	94	Strongly Agree
F15	94	Strongly Agree
F16	93	Strongly Agree
F17	96	Strongly Agree

Table 2 : Rubrics Table

Rubrics $\geq 70\%$ Strongly Agree, 60- 69% Agree, 50- 59% Neutral, 40- 49% Disagree, $< 40\%$ Strongly Disagree

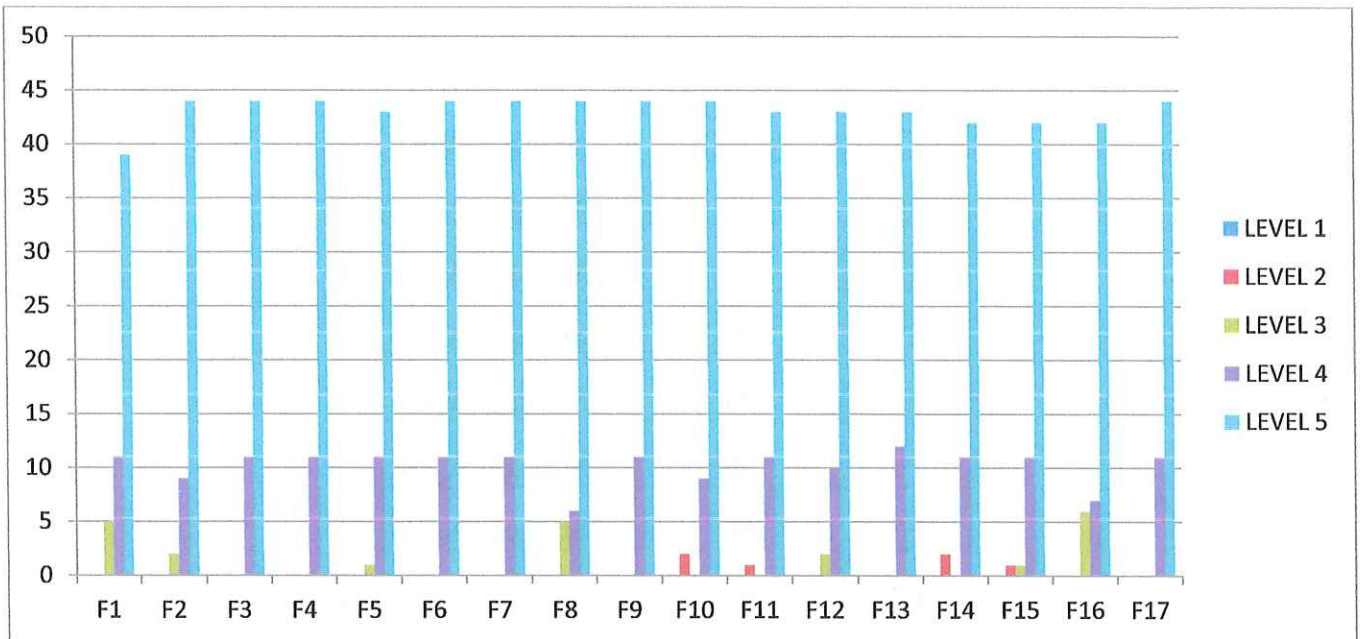


Figure 1 : Response Level Graph